

Application

Designed to house a variety of electrical and electronic controls and instruments. Provisions for optional surface mounting or rack mounting of almost any type of equipment. Provides a degree of protection from dust, dirt, water and oil. The enclosures are extra deep for applications requiring more interior space.

Construction

- 0.104" Stainless Steel Type 304 & 316/316L.
- Removable and interchangeable doors.
- Stainless steel concealed hinges.
- Seams continuously welded and ground smooth.
- Strong, rigid construction with stiffeners welded on backs of single access boxes.
- Lifting eyes for easy handling.
- Black zinc die cast keylocking/padlocking handle.
- 3-point latching mechanism.
- Black quarter turn latches as required.
- Latch rods have ramp shoes for easier door closing.
- Flange trough collar around all sides of door opening.
- Removable center post.
- Removable print pocket.
- Mounting channels welded horizontally on sides of interior body at top, bottom and middle for mounting optional panels or rack mounting angles.
- Pour in place oil and water resistant gasket.
- Ground stud on door and body.
- Provisions for light kit.

Finish

#4 brushed finish on all exterior surfaces. Optional subpanels powder coated white.

Accessories - See page 144-151

IS6 Industry Standards

NEMA Type 3R, 4, 4X, 12 & Type 13
UL Listed Type 3R, 4, 4X & 12
CSA Type 3R, 4, 4X & 12
IEC 60529 IP66

***To maintain Type 3R listing, drainage is required. Install equally rated drainage device or drill a 1/8 to 1/4 inch hole in the bottom center of the enclosure, approximately 1 inch from the right, and 1 inch from the left for drainage, use listed rain-tight or wet location hubs. Drip shield over the door is recommended for all outdoor applications.

304 STAINLESS STEEL

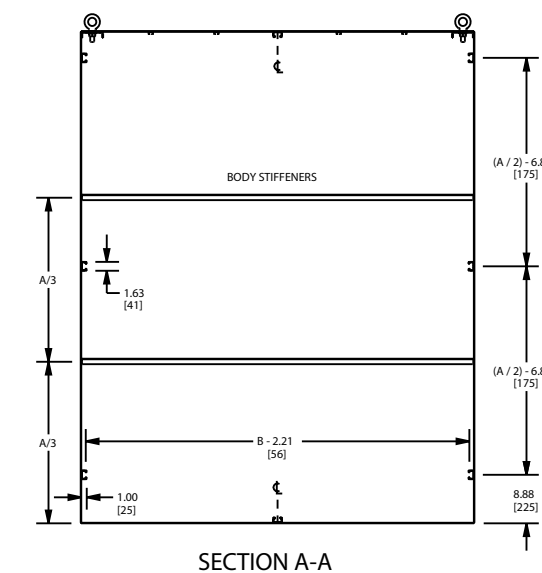
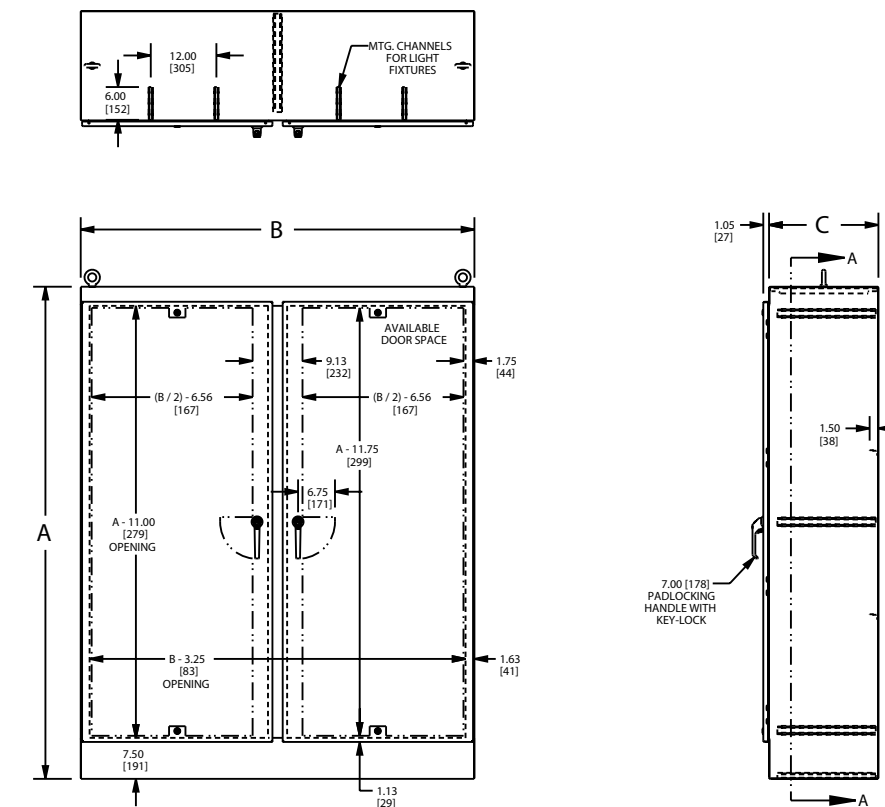
Enclosure Product Code S4

Catalog No.	Height (A)	Width (B)	Depth (C)	Industry Standard
SCE-60EL4818SSFSD	60.00	48.00	18.00	IS6
SCE-72EL4818SSFSD	72.00	48.00	18.00	IS6
SCE-72EL4824SSFSD	72.00	48.00	24.00	IS6
SCE-72EL6018SSFSD	72.00	60.00	18.00	IS6
SCE-72EL6024SSFSD	72.00	60.00	24.00	IS6
SCE-72EL6036SSFSD	72.00	60.00	36.00	IS6
SCE-72EL7218SSFSD	72.00	72.00	18.00	IS6
SCE-72EL7224SSFSD	72.00	72.00	24.00	IS6
SCE-90EL4820SSFSD	90.00	48.00	20.00	IS6
SCE-90EL7220SSFSD	90.00	72.00	20.00	IS6
SCE-90EL7224SSFSD	90.00	72.00	24.00	IS6
SCE-90EL7236SSFSD	90.00	72.00	36.00	IS6

316 STAINLESS STEEL

Enclosure Product Code S4

Catalog No.	Height (A)	Width (B)	Depth (C)	Industry Standard
SCE-60EL4818SS6FSD	60.00	48.00	18.00	IS6
SCE-72EL4818SS6FSD	72.00	48.00	18.00	IS6
SCE-72EL4824SS6FSD	72.00	48.00	24.00	IS6
SCE-72EL6018SS6FSD	72.00	60.00	18.00	IS6
SCE-72EL6024SS6FSD	72.00	60.00	24.00	IS6
SCE-72EL6036SS6FSD	72.00	60.00	36.00	IS6
SCE-72EL7218SS6FSD	72.00	72.00	18.00	IS6
SCE-72EL7224SS6FSD	72.00	72.00	24.00	IS6
SCE-90EL4820SS6FSD	90.00	48.00	20.00	IS6
SCE-90EL7220SS6FSD	90.00	72.00	20.00	IS6
SCE-90EL7224SS6FSD	90.00	72.00	24.00	IS6
SCE-90EL7236SS6FSD	90.00	72.00	36.00	IS6



LATCH NOTE:
OMIT CENTER LATCH TOP AND
BOTTOM OF DOOR WHEN DOOR
WIDTH IS <= 30.00" [762]